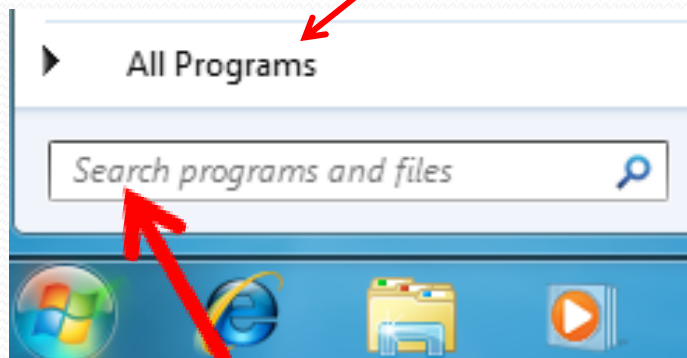


# Directions for using the Snipping Tool

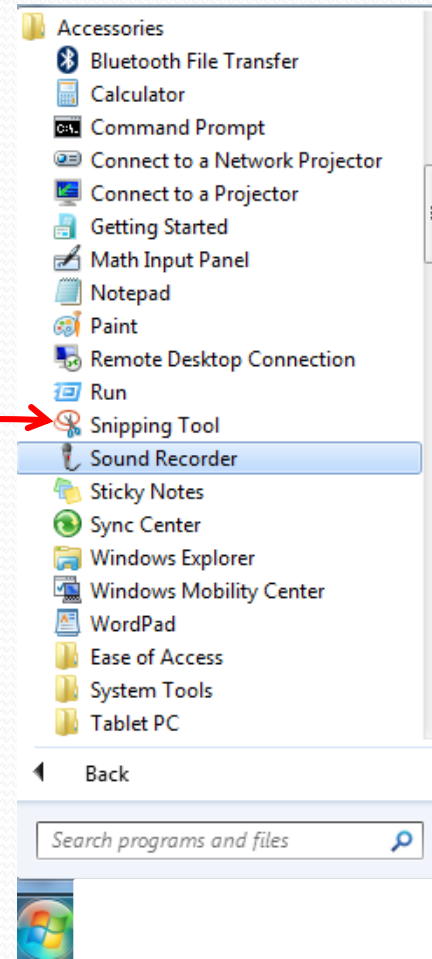
1. Click on your start menu (yours might be different depending on your background)



2. Click on All Programs



You can also just type snipping tool in the search bar.



3. Click on the "Accessories" tab then click on Snipping Tool



4. This box will pop up click on the arrow, then click on "Rectangular Snip", then click new and select your problems

5. Right click on the box that pops up and click copy then click back onto this class and right click again and click paste.